

Quarterly News & Updates

Summer | 2023

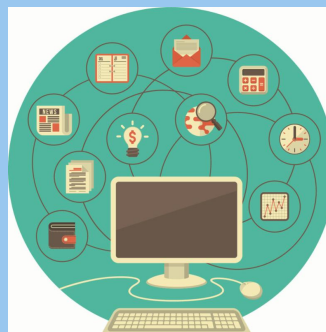
Welcome to the Division on Addiction's Summer Quarterly Newsletter!

Announcements



We are proud to announce that Annette Siu has joined the Division on Addiction as a Research Coordinator. She recently graduated from Brandeis University with BA degrees in Psychology and Health: Science, Society, and Policy. At Brandeis, she was a research assistant at the Child and Adolescent Research on Development Lab, where she focused on child development research and also completed a senior thesis examining the effects of team versus individual sports on prosocial behavior and mental health outcomes in adolescents. We look forward to Annette's contributions to our research activities!

Upcoming Events



On June 27th, Dr. Debi LaPlante will be presenting about "Open Science in Gambling Research" as a part of the International Center for Responsible Gaming's webinar series. Learn more and register for free [here](#).

On August 10th/11th, Dr. Eric Louderback will be presenting on "Implications of Big Wins for Gambling Behavior and their Effects on Future Sports Betting" as a part of the Responsible Gaming Association of New Mexico's annual Problem Gambling Conference. Learn more and register [here](#).

Did you know?



new & improved



The BASIS has been completely redesigned! Check out our new site [here](#). We continue to offer cutting-edge addiction science and resources to raise awareness, reduce stigma, and improve lives. Click [here](#) to subscribe to get The BASIS delivered to your inbox each week.

The language that healthcare providers use in their clinical notes can inadvertently perpetuate stigma towards people living with addictive disorders. A recent study found that almost 62% of patients had clinical notes with at least one stigmatizing phrase, the most common being “abuse” and “substance abuse.” For people living with addictive disorders, this type of behavior can lead to mistrust in the healthcare system, resulting in poor treatment adherence and poor overall health. These findings suggest a need to educate providers and the general public on stigma reduction strategies. Read more at [The BASIS](#).

Outreach Corner

New course alert! [The MA Technical Assistance Center for Problem Gambling Treatment \(M-TAC\)](#) has released “Community Voices in Recovery,” a free online course consisting of 6, 1-hour continuing education modules that teaches allied health professionals how to provide optimal addiction care for patients minoritized by race and ethnicity, gender identity and sexual orientation, history of incarceration, and experiences of homelessness. This course takes a holistic approach by considering multiple substance-based and behavioral expressions of addiction, with a particular focus on problem gambling. Learn more on the [M-TAC courses page](#).



We are proud to partner with Health Resources in Action to produce M-TAC trainings and resources, which are funded by the Massachusetts Department of Public Health’s Office of Problem Gambling Services.

Research Spotlight

Daily Fantasy Sports (DFS) contests not only provide

Research Spotlight



players with the opportunity to wager on the performance of athletes, but also encourages players to interact with one another, such as through cash incentivized referrals. But does interacting socially increase the likelihood that players will take part in riskier DFS contents? [Dr. Matthew Tom and colleagues](#) analyzed DraftKings DFS player records and found that players who (1) earned money through the Refer a Friend program and (2) referred friends more frequently and successfully were more likely to choose DFS contests with lower chances of winning. These findings suggest that engaging in social behaviors is linked with a preference for contests with lower chances of winning but higher

payouts. However, more research is needed to understand if that kind of contest selection is a sign of future problems with DFS or with gambling. More research is also needed to understand how social behaviors interact with one another and contribute to a player's risk of experiencing DFS-related harms. If you'd like a full copy of this article, contact us at info@divisiononaddiction.org.

Dr. Tom says, "What surprised me most was that these findings did not automatically indicate that those who successfully referred friends were more likely to suffer from DFS or gambling problems. But rather, these findings suggest that people who successfully referred friends tended to play riskier, high variance, lottery-style contests with larger payouts to the top finishers, rather than contests that paid more participants but paid out smaller prizes. It's possible that when trying to convince others to try DFS, inviting others to play in lottery-style contests and go for big windfalls and life-changing money is more appealing than inviting someone to try to double or triple a \$1 or \$5 bill."

Meet the Team

Caitlyn Matykiewicz
Community Health Educator

Caitlyn S. Matykiewicz, MPH joined the Division in 2021. She contributes to multiple outreach and education projects, including the [Massachusetts Technical Assistance Center for Problem Gambling Treatment \(M-TAC\)](#), where she is the Technical Assistance Coordinator for the Northeast and MetroWest regions. She also writes for [The Brief Addiction Science Information Source \(BASIS\)](#) and manages the Division's social media accounts. This summer, she is looking forward to reading on her porch and completing her Graphic Design & Visual Communications Certificate at Emory University.



[Learn more about our faculty and staff](#)

here.

Our Latest Publications

LaPlante, D. A., Louderback, E. R., & Abarbanel, B. (2021). Gambling researchers' use and views of open science principles and practices: a brief report. *International Gambling Studies*, 21(3), 381-394.

<https://doi.org/10.1080/14459795.2021.1891272>

Shaffer, H. J., Ladouceur, R., & Blaszczynski, A. (2023). A Comment: Positive Play is a Subset of Responsible Gambling. *Journal of Gambling Studies*.

<https://doi.org/10.1007/s10899-023-10204-3>

Heirene, R. M., LaPlante, D. A., Louderback, E. R., Keen, B., Bakker, M., Serafimovska, A., & Gainsbury, S. M. (In press). Preregistration specificity & adherence: A review of preregistered gambling studies & cross-disciplinary comparison. *Meta-Psychology*.

Request full-text copies by emailing info@divisiononaddiction.org

Browse our research library here.

www.divisiononaddiction.org | www.basionline.org | www.thetransparencyproject.org



CHA Division on Addiction | 350 Main Street, Malden, MA 02148

[Unsubscribe info@divisiononaddiction.org](mailto:info@divisiononaddiction.org)

[Update Profile](#) | [Constant Contact Data Notice](#)

Sent by info@divisiononaddiction.org in collaboration
with



Try email marketing for free today!