

Quarterly News & Updates

Spring | 2023

Welcome to the Division on Addiction's Spring Quarterly Newsletter!

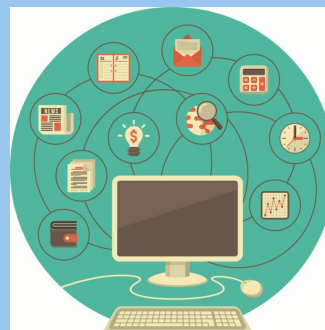
Announcements



Join us in congratulating three Division on Addiction staff, Dr. Sarah Nelson, Ms. Vanessa Graham, and Ms. Kira Landauer, on their promotions! Dr. Sarah Nelson, Director of Research, has been promoted to Associate Professor of Psychology in the Department of Psychiatry at Harvard Medical School. Ms. Vanessa Graham has been promoted to Associate Director of Administration, and Ms. Kira Landauer has been promoted to Community Health Educator Supervisor. Congratulations to you all, and thank you for the important work you do in the addiction field! Click [here](#) to learn more about Division on Addiction staff members.

Outreach Corner

Upcoming Events



Several of our researchers will be presenting at the International Gambling Institute's Gambling and Risk Taking Conference in Las Vegas. Click [here](#) to learn more and register.

[The MA Technical Assistance Center for Problem Gambling Treatment \(M-TAC\)](#) is hosting two upcoming trainings: Introduction to Gambling Disorder Treatment Best Practices on April 26 from 11:00am-12:30pm and Cultural Humility on June 16 from 11:00am-1:00pm. Click [here](#) to register and view the full training calendar. We are proud to partner with Health Resources in Action to produce M-TAC trainings and resources, which are funded by the Massachusetts Department of Public Health's Office of Problem Gambling Services.

Dr. Eric Louderback will be presenting on "Responsible Gambling Information Centers: A Review of the Research" as a part



This year marks the 10th annual [Gambling Disorder Screening Day](#) event! Staff held a tabling event at CHA's Everett Hospital where people could learn more about Gambling Disorder Screening Day and its mission, gain a better understanding of their relationship with gambling by screening themselves for Gambling Disorder, and access helpful gambling-related resources. Individuals and/or organizations from at least 34 states participated in Screening Day.

of International Center for Responsible Gaming's [webinar series](#). Click [here](#) to learn more and register.

Did you, in any way, participate in Gambling Disorder Screening Day this year?

Yes

No

Did You Know?



College students from schools who participate in the NCAA Men's Division I basketball tournament (March Madness) reported increased drinking behavior, including binge drinking, drunk driving, and/or riding in a car with a drunk driver, when compared to students whose basketball teams did not advance in the March Madness tournament. Males were more likely to engage in drinking behavior compared to females and this behavior increased as the team progressed through the tournament bracket. Read more at [The BASIS](#).

Research Spotlight

[Dr. Timothy Edson and his colleagues](#) recently conducted a meta-analysis to investigate the relationship between problem gambling and self-

Research Spotlight



harm. They found a positive, statistically significant meta-analytic effect of problem gambling on both suicide ideation and suicide attempts. The effects of problem gambling were comparable to well-established risk factors for suicide ideation and suicide attempts, such as having an anxiety disorder or being previously hospitalized for a psychiatric condition. These findings suggest that behavioral health providers should incorporate routine screening and brief interventions for problem gambling, which may appreciably reduce the risk of self-harm. Gambling operators should consider incorporating self-harm prevention as a part of their responsible gambling initiatives, and communities should

consider increased population-level self-harm risk as a potential consequence of gambling expansion. If you'd like a full copy of this article, contact us at info@divisiononaddiction.org.

Dr. Edson says “What surprised me the most was the extent to which studies contributing larger effects to the meta analyses tended to be less precise. The forest plots clearly showed that studies finding stronger effects of problem gambling on self-harm also tended to have larger error bars accompanying those effects (so less confidence in them) compared to studies showing weaker, or non-significant, effects. This points to the need for more quality research examining the problem gambling/self-harm relationship.”

Meet the Team

Dr. Seth P. McCulloch

Research & Evaluation Scientist

Dr. Seth McCulloch joined the Division in 2022 as a Research and Evaluation Scientist. He works on a variety of projects related to public health on topics such as alcohol consumption, responsible gambling, and opioid drug use. In addition, he is actively involved with writing grant applications and presenting at conferences. His research has appeared in a number of peer-reviewed scientific journals on topics such as [approaches for reducing stigma toward mental illness](#), [strategies to promote screening for sexually transmitted infections](#), and [methods for promoting participants' understanding of consent forms](#). At the Division, he also contributes to writing articles for the weekly [Brief Addiction Science Information Source \(BASIS\)](#) newsletter, which summarizes recently published research in the addiction sciences. In his free time, he loves reading, watching movies, hiking, cooking, and playing pickleball.

[Learn more about our faculty and staff here.](#)

Our Latest Publications

Edson, T. C., Louderback, E. R., Tom, M. A., Philander, K. S., Slabczynski, J. M., Lee, T. G. & LaPlante, D. A. (2023). A large-scale prospective study of big wins and their relationship with future involvement and risk among actual online sports bettors. *Computers In Human Behavior*, 142.

<https://doi.org/10.1016/j.chb.2023.107657>

Gray, H.M. & LaPlante, D.A. (2023) Calling for worldwide adoption of Gambling Disorder Screening Day. *Addiction Research & Theory*.

<https://doi.org/10.1080/16066359.2023.2189246>

Walker, D. M., LaPlante, D. A., & Nelson, S. E. (In press). Quitting while you're ahead: Evidence for individual gambling thresholds from a survey of Massachusetts gamblers. *Journal of Gambling Business and Economics*.

Request full-text copies by emailing info@divisiononaddiction.org

[Browse our research library here.](#)

www.divisiononaddiction.org | www.basionline.org | www.thetransparencyproject.org



CHA Division on Addiction | 350 Main Street, Malden, MA 02148

[Unsubscribe info@divisiononaddiction.org](mailto:info@divisiononaddiction.org)

[Update Profile](#) | [Constant Contact Data Notice](#)

Sent by info@divisiononaddiction.org in collaboration with



Try email marketing for free today!